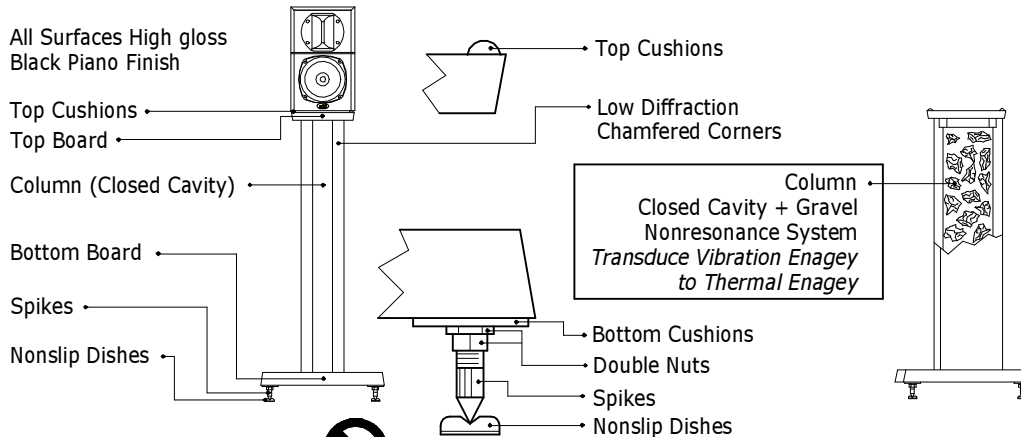


### Dear Music Lover,

Thank you for purchasing **mhi Speaker Stands**, a high performance and high quality speaker stands. The unique features of this product provide *Clear Imaging and Smooth High Definition Sound*. Each stand incorporates closed cavity construction to fill gravel. The gravel transduces Vibration energy to Thermal energy. These are perfect matched speaker stands for "Evidence MM01A" and any other small speaker systems. We are confident that once you listen with these Speaker Stands you will hear the difference.

### Perfect Matched Speaker Stands for "Evidence MM01A"



### Specifications

Black Piano Finish -----All Surfaces  
 Top Board -----W 152 mm x D 192 mm  
 Column -----W 105 mm x D 166.5 mm  
 Bottom Board --W 300 mm x D 330 mm  
**Spaker Stand**  
 W 300 mm x D 330 mm x H 660 mm  
 (Without Cushions, Spikes)  
 Spike + Dish -----H 35 mm to 39 mm  
 Weight -----6.8 kg ( 15.0 lbs. ) each  
 Fillable Gravel-----  
 6 to 8 Kg (13 to 18 lbs) each

### Improper Usage

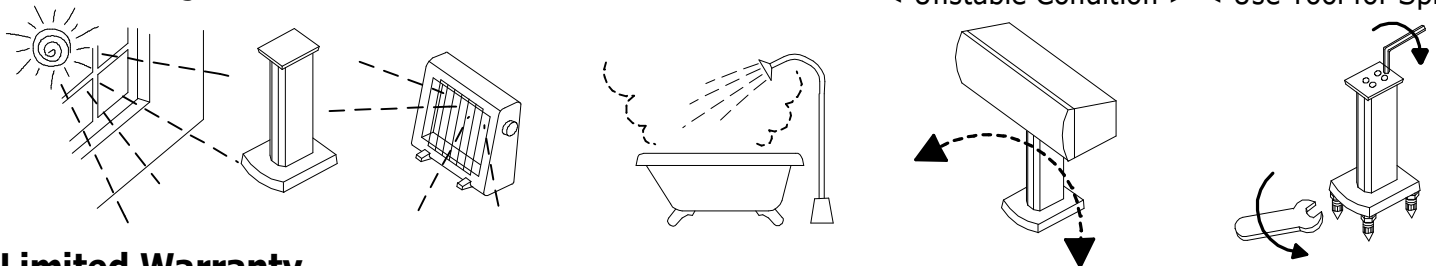
Protect your investments from performance & appearance damage

< Direct Sunlight >    < Excessive Heat >    < Moisture >

< Excessive Weight >

< Over Tighten >

< Unstable Condition >    < Use Tool for Spikes >



### Limited Warranty

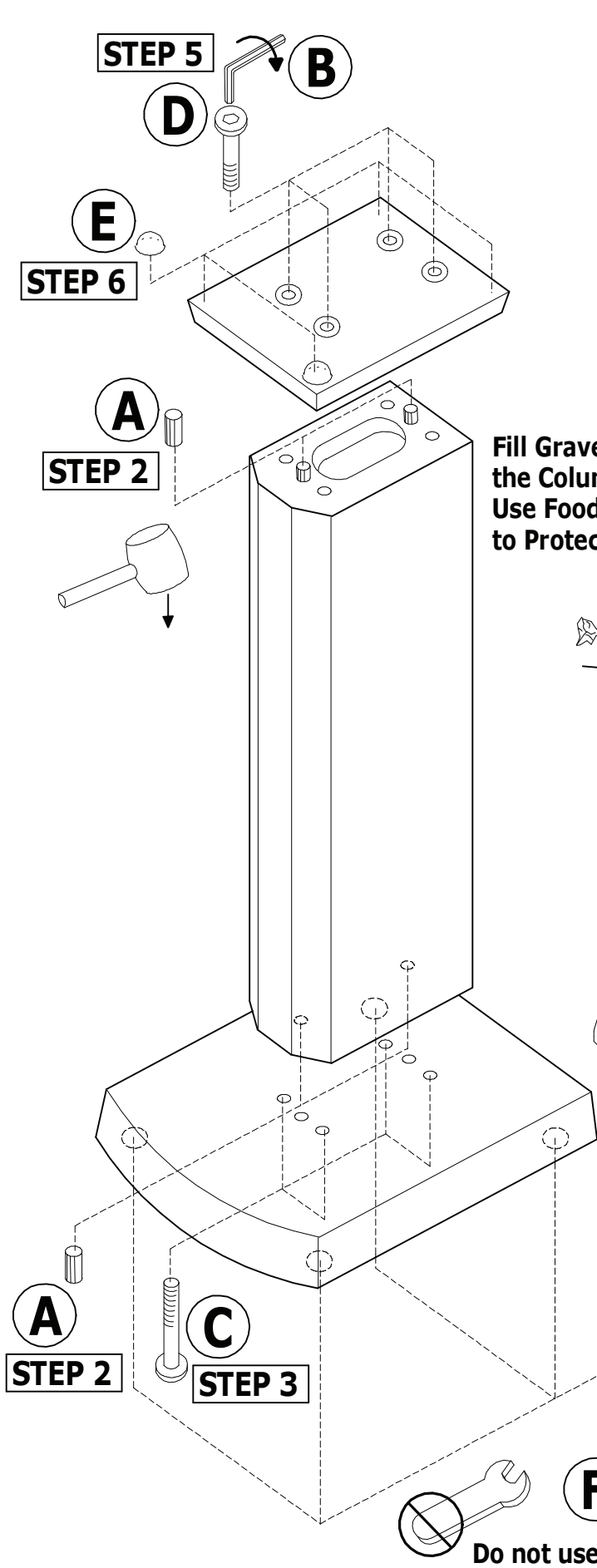
Your mhi speaker stands are warranted to be free of defects for **ninty (90) days** after original purchase. If a speaker stand fails to perform during the warranty period, we will repair or replace it at our option. The warranty does not apply to damage caused by physical abuse to the speaker stand, or unauthorized modifications or repairs performed by anybody except mhi or its dealers, or designated service agents. This warranty specifically excludes consequential damage to other devices. mhi is not responsible for any consequential damage.

If a speaker stand requires service, you may either consult your mhi dealer, or send it directly to mhi. If you chose to return it to mhi, please telephone first. If we can diagnose the problem by telephone, we may be able to tell you how to fix it without the inconvenience and expense of packing and shipping the speaker stand. Please do not send us your speaker stand until we give you a return authorization. You are responsible for the cost of shipping to mhi; if the product is still under warranty, we will return it to you at our expense. You can reach mhi service department at this address:

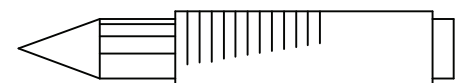
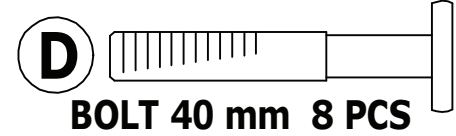
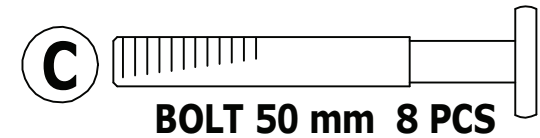
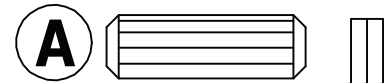
mhi  
 1235 Countess Drive  
 Corona, California 92882 USA  
 Phone: 951-898-1121 / Fax: 951-898-5627 / e-mail: m\_h\_i\_@msn.com

YOUR PRODUCTS' SERIAL #

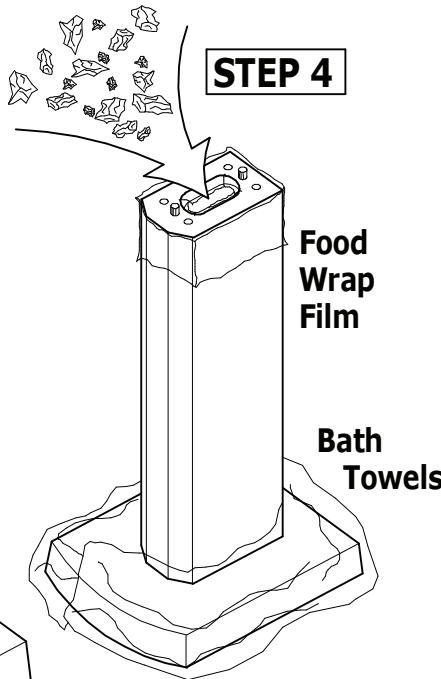
Outside the United States and Canada, please contact your dealer first. Please use the original packing materials when you ship a product to us. If you did not save the original box, let us know when you request a return authorization, and we will send you another box. We will charge you for the replacement box at our cost.



**STEP 1** Check All Parts (inside of Column)  
**SHOWED ACTUAL SIZE DOWEL 8 PCS**



Fill Gravel (Not Pebbles) to Top of the Column. 6 to 8 Kg (13 to 18 Lbs)  
 Use Food Wrap Film and Bath Towels to Protect from damage.

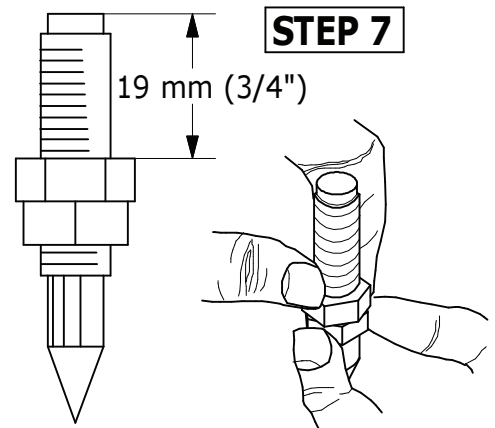


**STEP 4**

Food Wrap Film

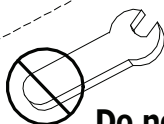
Bath Towels

**STEP 7**



Tighten the Double Nuts  
 Keep 19 mm from Top to Nut

**STEP 8**



Do not use Tool to Tighten